

Greening
OUR
Workspace



ROMANIA
GREEN
BUILDING
COUNCIL

presents

PRO
Building
the Future
ecovision





The Romania Green Building Council's mission is to encourage the transformation of the market, educational and legislative conditions necessary to promote high performance construction that is both sustainable and profitable.

We do this by organizing a variety of events, from the Build Green Professional training courses to the monthly Green Cafes or European Green Building Councils' annual events. In an year's time, more than 1000 people visit our Bucharest center on Ialomicioarei street no 21 .



Usually, the events take place at the ground floor of the building. The Events Room, as well as the space usually used for having lunch and coffee breaks are always full of people exchanging ideas (or business cards), in the friendly environment we provide for our guests.

Greening

Workspace

RoGBC is Greening its Workspace

RoGBC main Office space - Ialomicioarei 21 Street
GROUND FLOOR PLAN - PRESENT DAY SITUATION



- ① ACCESS LOBBY [5,70 sqm]
- ② EVENT ROOM [30,00 sqm]
- ③ RECEPTION AND CATERING AREA [27,50 sqm]
- ④ CONFERENCE ROOM [14,20 sqm]
- ⑤ KITCHEN [8,80 sqm]
- ⑥ STORAGE ROOM [9,50 sqm]
- ⑦ RESTROOM [8,10 sqm]
- ▲ MAIN ACCESS POINT

“Greening our Workspace” is a real-life interior design project aiming to transform the Romania Green Building Council's office building into a **deep green workspace**. It is a project that showcases and expands the sustainable practices that the RoGBC have implemented so far, but also introduces new, high-standard solutions proposed by the Project Partners.

The project will contribute to the comfort and **flexibility** of the workspace as well as the health and well-being of the building's occupants.

- ① ACCESS LOBBY [5,70 sqm]
- ② **EVENT ROOM** [30,00 sqm]
- ③ **RECEPTION AND CATERING AREA** [27,50 sqm]
- ④ CONFERENCE ROOM [14,20 sqm]
- ⑤ **OFFICE SPACE** [8,80 sqm]
- ⑥ **KITCHEN** [9,50 sqm]
- ⑦ RESTROOM [8,10 sqm]



RoGBC main Office space Ialomicioarei 21 Street
GROUND FLOOR PLAN - **NEW SITUATION**



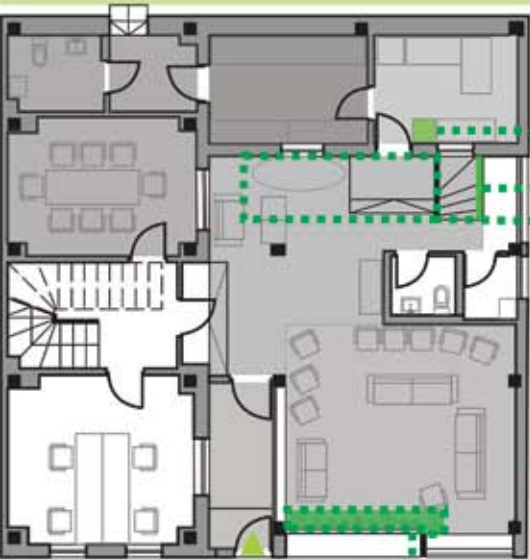
As the developer of the Green Workspace (or Green Office) program, we have already implemented a set of sustainable actions to turn our office into a more responsible space that encourages consumption reduction and use of natural features.

We encourage our employees to use alternative means of transportation, so we organized a **bicycle “parking” space** underneath the ladder.

We **collect the paper** that we use daily in a cardboard box placed near the entrance space, so that anyone can use it. Then, the paper is recycled. It might not seem much, but in three months we manage to save 2,5 trees from being cut.

A lot of energy is being used just for keeping an office space clean. We’ve reduced that by placing an intelligent **dirt-tracking carpet** in the entrance lobby.





We use a **water filtering system** that works by traditional means.

We make the most of the **natural lighting** available in our office building, thus limiting energy consumption used for artificial lighting.

Not only do we have windows, but they are **operable** and so, a lot of energy spent for cooling the hot air in the summer is being saved.

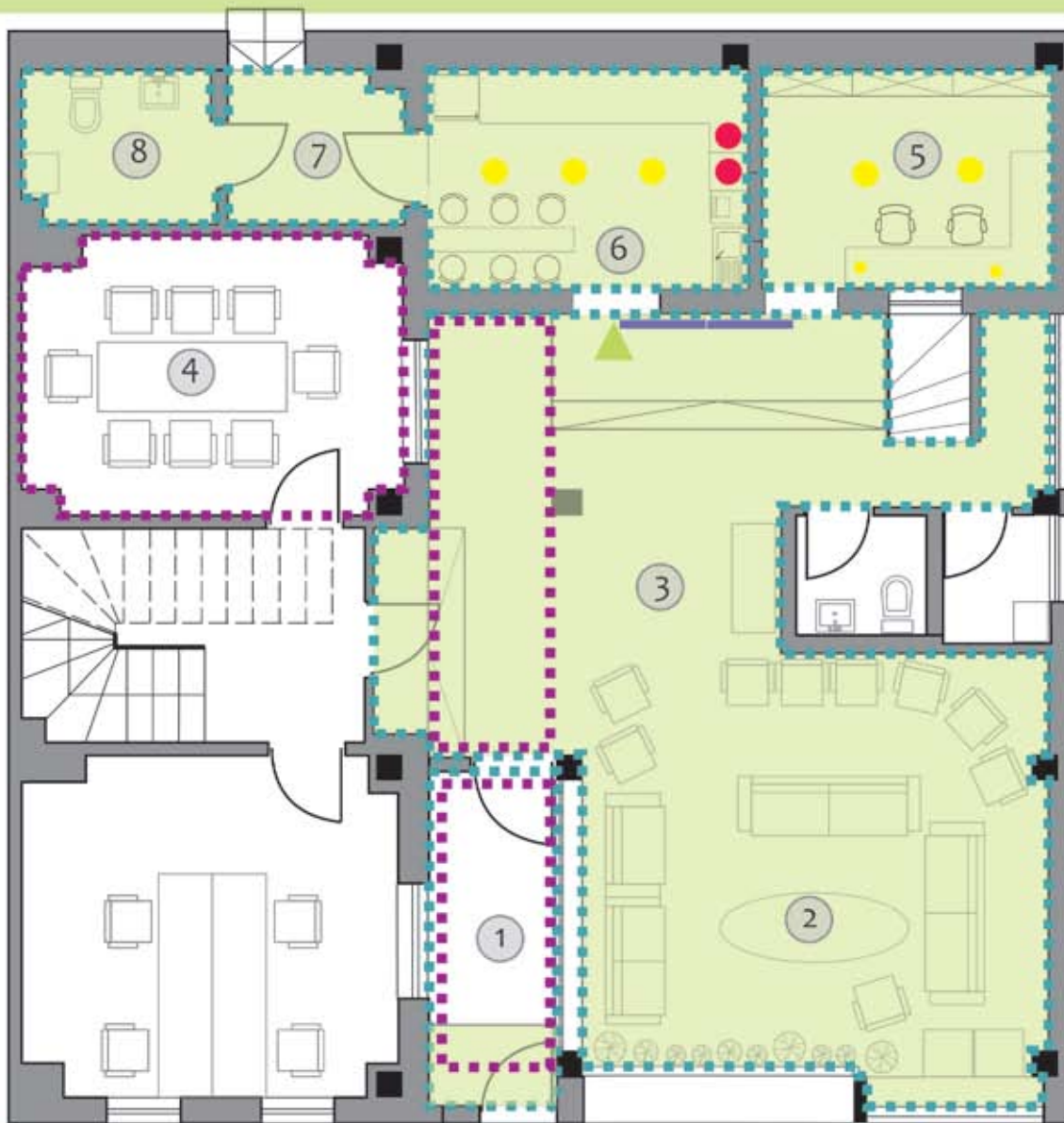


Healthy indoor air is important for us. We have a **green wall**, but also a lot of **flower pots** that give us oxygen and brighten our day.

Greening

Workspace

RoGBC Green Features



The project is a tangible case study for the **Green Workspaces** program that the RoGBC has been developing and following for the last three years. This project will exceed the current physical boundaries of the space, to set a green example for other workspaces in Romania and beyond.

The story of G.o.W. project and all of its partners will be told at green industry-related events to share the results and lessons learned.

The space redesigned through this project will become a green venue, home for green building training and for sustainable professionals and companies willing to showcase their high standard products, materials and technology.

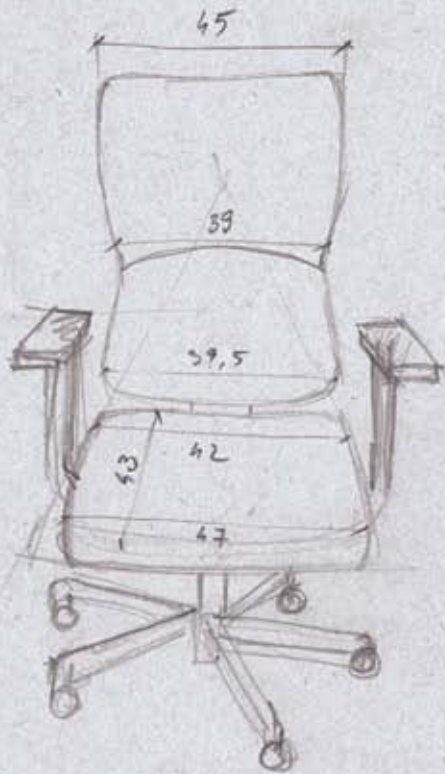
- ▲ new ACCESS POINT
- New Green Solutions :**
- FLOORING
- ▬ CEILING
- ▬ WALL PAINTING
- ▬ Sliding DOORS
- APPLIANCES
- LIGHTING FIXTURES



New Green Solution :

A new access point is being designed to replace the existing window with a sliding glass door. This way, the kitchen will better relate to the events room and more natural light will be added into the room.

3. scam - 8 buc



4. fololii - 1 buc



We have already REDUCED our consumption of office supplies and energy. Now it's time to REUSE and RECYCLE everything surrounding us, turning the Cradle-to-Cradle™ and equally ambitious methodologies into our reality.

The project will make the most of the existing resources. From furniture to cardboard boxes or wood battens stored in the attic, every unused object will be given a new life.

A minimum of 80% of the resources found on site will be integrated into the new design.

New Green Solution :

We are keeping track of all of the existing furniture, considering it an important resource to be reused.

In the Events Room, this furniture will be upholstered or covered with organic textiles.



We will completely change the look of the RoGBC main office, turning it into a pleasant, healthy and enjoyable space. The best sustainable solutions will be chosen for flooring, painting and textile covering of the existing furniture.



New Green Solution :

In order to obtain a flexible design that can be restored at any time, the new flooring solution will be mounted directly onto the old one.

The new sustainable wall paint will be applied over the existing layer of eco-paint



New green paint

Energy-efficient general lighting bulbs

Restored old furniture

Contemporary painting

New green flooring

Energy-efficient task (desk) lighting

The current kitchen will become a comfortable office space for 2-3 people. Both general lighting solution and task (desk) lighting are important, as we wish to create a nice work space that enhances the personal creativity and well-being.

In order to maintain the new office space's privacy, the door to the new kitchen (ex-storage space) will be blocked in a easily restorable manner, just by placing a painting on top of the now unused access point.

New Green Solution :

Existing furniture will be painted in a brighter color and will be used. The interior lighting project will use energy efficient solutions and will help the space become more vivid.



Energy-efficient general lighting bulbs

The current storage space will become a lively and colored kitchen, in which not only the employees but also guests can enter during lunch- or coffee breaks.

New green paint

New flooring and wall paint will be added on top of the existing finishes, while the furniture will be painted and integrated into a new layout.

Contemporary painting

New sliding door

The new green-oriented appliances are important to teach the employees and RoGBC guests of the importance of low consumption and possibilities to recycle.

Sustainable appliances

Restored old furniture

New Green Solution :
Existing furniture will be painted in a brighter color and will be used. The interior lighting project will use energy efficient solutions and will help the space become more vivid.

PHASE	NAME	OBJECTIVES	DURATION	TYPICAL ACTIVITIES	OUTPUT	NOTES	
1	PRELIMINARY DESIGN	first approach of project	24 - 27 October [4 days] 24 October - DC[02]		concept sketches and images	first sketches presented at the 20 Oct. Green Café	COMPLETED
2	SURVEY	getting a real image of the existing resources - SPACES and ELEMENTS	24 - 27 October [4 days] 24 October - DC[02]	measuring and drawing does not exclude design sketches taking pictures	dwg drawings sketches drawn by hand / PS pictures Resources Inventory	SPACE surveying : including the position and dimensions of pipes FURNITURE surveying : exact measurements	COMPLETED
3	FINAL DESIGN	establishing a solution	28 - 31 October [2 days] 28 October - DC[03]	drawing taking pictures	dwg drawings renderings sketches	all ideas must be supported by RESEARCH	COMPLETED
4	RESEARCH AND ORDERING	finding the best solution for each chosen element	1 - 7 November [5 days] 1 Nov - DC[04]				in progress
5	CONSTRUCTION WORK PRESENTATION DOCUMENT	getting the spaces ready for use putting together a Presentation Package	8 November - 2 December [16 days] 8 Nov - DC[05] 17 Nov - DC [06] 29 Nov - DC [07]	cutting, sticking, mounting taking pictures making sure everything is in its place	a green workspace pictures pdf and Powerpoint Presentation Package	RoGBC events on 10 and 25 Dec- no work can be done !	
6	FINAL TOUCHES	completing Phase 5	5 - 7 December [3 days]		a green workspace ready for cutting the ribbon		

To achieve all this, continuous research is required from the professionals involved. This is an integrated design project, and Design Charrettes discussing the project are organized on a weekly basis, according to the Project Plan. All of the ideas and design decisions are recorded, so the Presentation Document containing all of the sketches, drawings and partner information will be continuously updated.



Timeline :

The design team began work in October 2011. The initial design charrettes were concluded in mid-October. The work is currently out to bid for construction start of early November. Project commissioning and launch is scheduled for 8 December 2011.